

**PULSAL.RU**  
+7 (812) 603-40-33

*idea*

 ***idea***

 **VIMAR**  
energia positiva



## **As many solutions as there are ideas.**

An extremely sophisticated, contemporary classic: Idea brings form to beauty following your taste, and makes the electrical system another way of expressing your style. Through the rigorous lines of the Classica cover plate or the softer forms of Rondò, to match with anthracite grey or white buttons. Idea offers you the greatest freedom of design choice: more than two hundred functions to manage every room in the home, many colours and four different materials to mix and match as you please. To manage energy under the sign of exclusive elegance.

A photograph of a white tufted armchair in the foreground, partially obscuring a fireplace. The fireplace has a fire burning inside. The scene is set in a room with light-colored walls and a dark carpet. A semi-transparent text box is overlaid on the right side of the image.

## TWO DESIGN

THE RIGOUR OF CLASSICA AND  
THE CURVES OF RONDÒ,  
TAKE YOUR PICK.

There are those who love square lines and those who prefer softer shapes: with Idea, everyone is free to choose their own style. Two different shapes of cover plate and two colours for buttons and controls, in elegant anthracite grey or delicate white.



**Idea Classica.**

The rigorous design of the Classica plate, with anthracite grey devices.



**Idea Rondò.**

The soft design of the Rondò cover plate, with white devices.



## BIG CHOICE

BUTTONS AND CONTROLS TO SUIT ANY  
INSTALLATION REQUIREMENT.

Free to compose your own lighting device: great modularity  
allows you to find the perfect solution for every setting.  
And choose the control technology you prefer for your  
own practicality and comfort.



**Modular controls.**

Every space and every function has its own ideal control. From the minimal space for one module to a maximum of three for buttons.



**Infrared management.**

To operate lights and automations with the utmost precision with infrareds operated from the remote control, the best in comfort.



**Automatic switch.**

Switches on the lights as you walk by. And keeps them on for just as long as you wish. To save energy and move freely.



**Functions where and how you want.**

Door opener, lights, roller shutters: the controls you need are always to hand, framed by an elegant cover plate. With or without symbols that explain their function, they respond to any installation need.

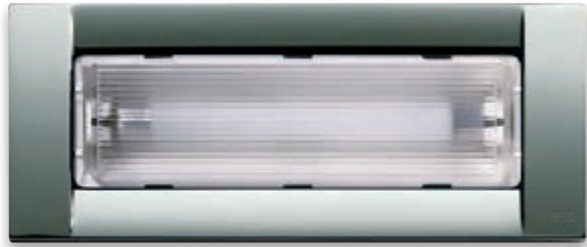


## RIGHT LIGHT

THEY MARK, INDICATE AND ILLUMINATE EVERY MOMENT OF THE DAY.

Soft lighting, bright lights, marker and emergency lighting, with Idea everyday actions are lit up impeccably. You can go from day to night, whenever and however you want, adjusting the intensity with simple and immediate gestures.





**Emergency light.**

If the power goes off, it comes on immediately. But if you prefer, you can use the version to install as a step light.



**Modular lights.**

LED lighting, ideal for lighting where you need: along a corridor or a staircase. You won't put a foot wrong!



**Warning lights.**

They tell you if the entrance gate is open or closed, if the garage light is on or off. All it takes is a glance.



**TORCIA, hand lamp.**

Ready immediately in the event of a blackout. It comes on automatically, lights your way in the dark, take it out and use it where you need. When the power comes back on, put it back in its place or in any other socket.



# SWEET ATMOSPHERE

EACH TO HIS OWN CLIMATE,  
IN AN INSTANT.

Relax and a perfect temperature for every environment, quickly, just by typing in the four digits on the Idea timer-thermostat, as easy as a the simplest mobile phone. From your wake-up call until bedtime, spend your whole day in total well-being.



**Touch thermostat.**

To maintain the required temperature, in winter and in summer. It's as simple as you think.



**Time delay switch for stair lights.**

Set the amount of time the lights stay on for after you pass by. So you don't waste energy, and keep on saving.



**Timer switch.**

Lights and irrigation come on at the set time even when you're not a home.



**Touch timer-thermostat.**

The temperature is programmed, supervised and modified quickly and easily.



## **EASY** LIFE

ALL THE SAFETY FEATURES YOU NEED  
TO LIVE PEACEFULLY.

No thoughts or worries about your home and its occupants. Everything is protected by the anti-intrusion system and the Idea technical alarms. Whatever the anomaly, it warns and blocks in an instant, making you feel safe.



**Socket with SICURY system.**

A Vimar patent that guarantees top security for all the Idea sockets.



**Interlocked socket.**

To protect you from the hazard of an electric shock, in the bathroom and the kitchen.



**By-alarm.**

The burglar alarm system protects your entire home making you feel safe and calm.



**Gas detector.**

Immediately detects a methane or LPG leak. It gives off an acoustic and visual message to warn of the hazard. It instantly blocks the gas supply.

A large window with a view of the New York City skyline and Central Park, with a tufted ottoman in the foreground.

## UNIVERSAL LANGUAGE

SOCKETS AND DEVICES THAT  
COMMUNICATE BEYOND BORDERS.

In contact with the world, any time, using the most advanced reception standards. Idea guarantees a sure, fast and high-performing dialogue and universal compatibility. Communication is ideal, the field of installation incredibly vast.



**Foreign standards.**

The best Italian design serving foreign-standard controls and sockets.



**TV-RD-SAT socket.**

To receive audio, video, digital and satellite signals from around the world. and stay connected, always.



**Freedom of installation.**

Flush, surface or table mounting, in consumer units or panels. Modularity that adapts to any space.



**Universal systems.**

Wherever you are there's a socket to suit you. Energy overcomes all boundaries, travelling inside safe, efficient systems that are functional to your living needs. All dressed up in an unique style: the one made in Italy.



## DISTINGUISHING **MARK**

A TOUCH OF CLASS, FOR A UNIQUE,  
INIMITABLE LOOK.

Laser-screen printed customised cover plates.  
Controls with symbols or writing to describe their  
function, chosen from the Vimar library or bespoke, and  
all can be backlit. Details that underline personality and  
a precise idea of beauty.





### Backlighting.

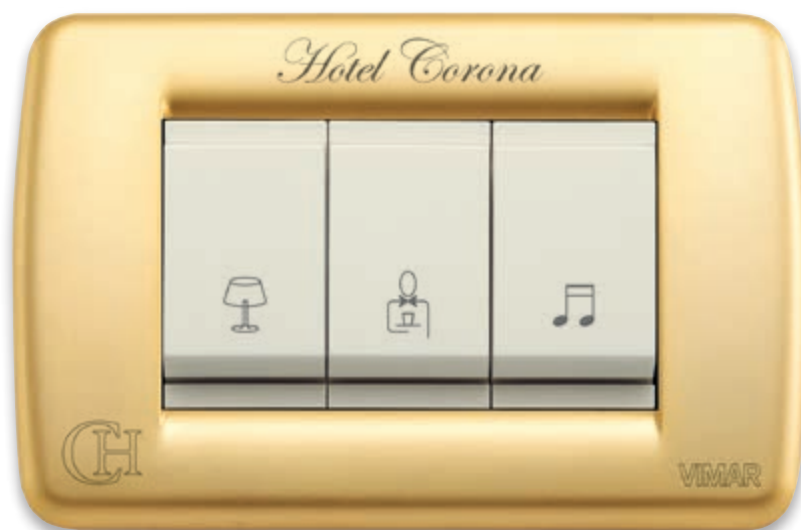
With neon or fluorescent signalling units, each button can be backlit to enhance its function immediately, even in the dark.

### Freedom of choice.

Laser engraving, indelible and timeless, with the highest definition. Idea moulds to suit your taste.

### Library of symbols.

A range of icons with elegant lines that add character to the buttons and make the use of the controls even more immediate.



### Customised service.

Hotels, health facilities, businesses: every professional activity can have cover plates marked with its own logo, with the tailor-made laser engraving service. For rocker switches, infrared or buttons with various types of modularity. A small detail to underline your own character.



Two different button sizes, with or without symbols, all back-lit to customise your system even better.

A modern home office with a desk, chair, and bookshelves. The room features a large, dark wooden desk with a silver X-shaped base, a black office chair, and a large, patterned rug. To the left, there is a long wall of white built-in shelving units with glass doors and open shelves. A window with white curtains is in the background, and a painting of red flowers is on the right wall. The floor is polished and reflects the room's elements.

# HOME AUTOMATION

INNOVATIVE SOLUTIONS FOR  
EFFECTIVE AND EFFICIENT HOME  
MANAGEMENT.

The evolved solutions of Idea offer a concrete response to the different needs of designers, installers and home owners, making a welcoming home also an intelligent one.

Control



**Supervision.**

All home functions, from climate control to lighting to the intrusion detection system and energy management, can be controlled centrally from a single control point, such as a touch screen with simple and intuitive interfaces.

Comfort



**Climate control.**

Thermostats and electronic probes precisely control the temperature, managing both underfloor and fan-coil systems to ensure full comfort.

Energy efficiency



**Energy management.**

Controlling loads and energy produced leads to greater awareness of energy efficiency.

Safety



**Environmental safety.**

Life at home is even safer, with technical alarms that signal any gas or water leaks and other faults and every load is controlled in order to switch off those as low priority so the appliances of the home are protected from power failures.



Intelligent and intuitive, By-me is the home automation system for the integrated management of all functions. Control, comfort, energy efficiency and safety dialogue constantly through a sophisticated and intuitive technology combining style and functionality with no compromises; optimising costs and consumptions, simply and intuitively managing all everyday activities from the smallest to the most important, helping to create a truly comfortable home.



**By-alarm integrated with By-me.**

By-alarm can be fully integrated with the By-me home automation system through the installation of an IP interface which guarantees a secure and protected connection, both locally and remotely via an internet connection. The functions can be controlled locally - using the touchscreen and the home automation commands and scenarios - or remotely, using the free By-web APP on a smartphone or tablet.



**Remote control by By-web app.**

The home at your fingertips. Thanks to App and software that enable the remote control of the Home Automation functions, in order to manage all the system supervised by video touch screen, PC, smartphone and tablet.



# **OFFICE** AUTOMATION

HIGH-PERFORMING AVANT-GARDE  
SYSTEMS IN STEP WITH THE FUTURE.

For the control, comfort, energy efficiency and safety of offices and tertiary premises, Idea offers a series of devices and systems for the quick, effective and centralised management of all work spaces.



**Central control.**

A small technological gem to control every room, with up to 40 different functions. With the immediacy of touch technology.



**Presence detection.**

Fitted with IR technology motion detector, the lights switch on only when and where needed.



**Data transmission.**

Different types of socket outlets are used to send and receive data quickly and safely, ensuring full working autonomy.



**Customized buttons.**

To respond to different working moments, customized scenarios can be activated - lowering a screen, blinds, dimming the lights or switching on the video projector.



**All at your fingertips.**

Thanks to the versatility of Idea, the devices - and the socket outlets and data transmission devices - are always close to hand.

**WELL-CONTACT PLUS**  by-com

An automation system developed on the KNX standard for total building management. In an office, community centre or a gym, Well-contact Plus constantly monitors the building, managing lights, temperature, safety, energy and accesses even from a PC, ensuring functionality and comfort in every room.

**NETSAFE** by-com

A structured wiring system for full connection: data transmission is totally safe, quick and easy, both inside and outside the building. Netsafe blends both technically and stylishly with a conventional electrical system, with highly versatile installation options - flush-, wall-, floor-and underfloor-mounting.

A photograph of a hotel room. The room features a bed with white linens and a dark headboard. The walls are made of light-colored wood, and the ceiling has exposed wooden beams. A lamp is visible on the left side of the bed. A semi-transparent dark blue box is overlaid on the right side of the image, containing text.

# **HOTEL** SOLUTIONS

ADVANCED, FLEXIBLE TECHNOLOGIES  
FOR HOTEL SERVICES.

For hotel management, Idea has a range of innovative devices and systems to control accesses, spaces and manage climate and energy, optimising the facilities and ensuring excellent comfort for guests at all times.



**Access control.**

Elegant transponder and smart card readers to provide access to various rooms only for authorised persons, thereby guaranteeing absolute security throughout the building.



**Turn on the room.**

Simply insert the magnetic card and the room shows all its splendour: the courtesy lights come on and the temperature is set to the optimum level. A great idea, also for reducing energy waste.



**Controls.**

With LED backlit buttons to manage up to four different functions locally.



**Temperature control.**

Climate control device for keeping each room under control. With the KNX standard, it dialogues with the main heating installations using this international protocol.



**Touch screen.**

Touch technology to monitor and manage a whole area of the building or a single room.

**WELL-CONTACT PLUS** by-com 

Whether a large hotel or a small, cosy bed&breakfast, Well-contact Plus is the system that uses KNX technology to intelligently and effectively manage the whole building, ensuring full synergy of all the devices installed. And using the Well-contact Suite applications, differentiated according to the use and size of the building, it can all be controlled from the computer at reception.

A modern office reception area. In the foreground, a blue leather chair is partially visible. To the left, a tall wooden planter holds a spherical arrangement of dried grasses. In the background, a reception desk is visible with a computer monitor and a chair. A long, horizontal display of framed images hangs on the wall above the desk. To the right, a black armchair with a cow print cushion and a small table with a vase of white orchids are visible. The floor is light-colored and polished.

## **MATERIALS** & COLOURS

MANY COLOURS TO MATCH TO YOUR FAVOURITE COVER PLATE.

A wide selection, of materials first and foremost: wood, metal, silk, technopolymer, all available in various colours. Plates with warm and classic colours, with sophisticated hues and bright shades to match with anthracite grey or white buttons. With the greatest freedom of design choice.





Metal



Solid wood



Silk



Technopolymer

# Metal



01 White



10 Ivory



11 Black



21 Metallized silver



22 Metallized bronze



23 Metallized anthracite



24 Metallized titanium



31 Black chrome



32 Polished gold



33 Matt gold



34 Brushed nickel



36 Chrome



37 Antique brass



46 Slate grey



01 White



10 Ivory



11 Black



21 Metallized silver



22 Metallized bronze



23 Metallized anthracite



31 Black chrome



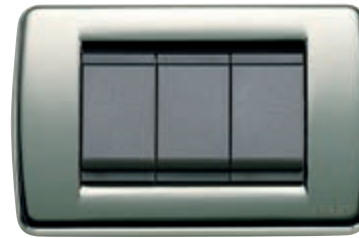
32 Polished gold



33 Matt gold



34 Brushed nickel



36 Chrome



37 Antique brass



46 Slate grey

## Solid wood



51 Maple



55 Walnut



56 Wengé



53 Cherry



55 Walnut



57 Teak

# Silk



04 Idea white



15 Graphite



16 Black



04 Idea white



15 Graphite



16 Black

# Technopolymer



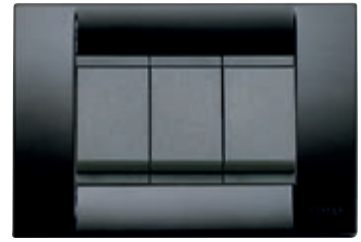
01 Bright white



04 Idea white



15 Graphite grey



16 Black



01 Bright white



04 Idea white



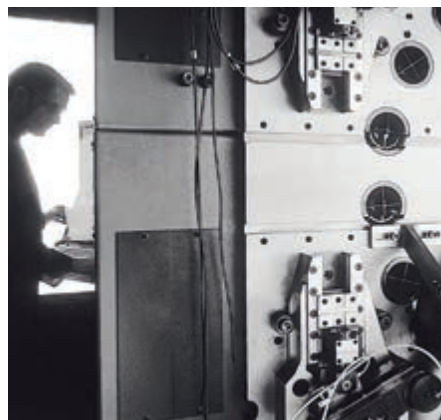
15 Graphite grey



16 Black

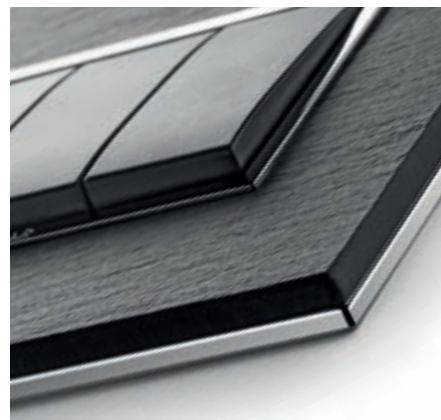
### **A history with deep roots.**

Light is energy... heat... life... in this direction we work since 1945, with passion and the desire to innovate. A long tradition and a history of success that over the years, has led us to be protagonist in Italy and present in the main international markets.



### **Made in Italy.**

The heart of our company, where we create, design and manufacture our products, is in the North East of Italy because we believe in the Made in Italy in all its forms. From the materials to the shapes, the color matches to electronic processes, we are distinguished by a style and technology that speak our language all over the world.



### **Design and technology.**

Our products evolve with lifestyle thanks the special attention to modern living trends. This allows us to offer finishes, details that make our products items of interior design. Convinced that form and technology must live together, we dedicate time and energy on developing new projects of electronic and electrotechnical engineering and materials.



### **Research and Development.**

To ensure the best of technology and design, 6% of our annual turnover is invested in R&D. This has allowed us over the years to lodge more than 180 patents worldwide, reflecting the attention of the great innovation like the little details that make every day life more simple and comfortable.



### **Production quality and customer service.**

Before leaving the factory, we test our products one by one. It is no coincidence that we deserved the most important quality certifications. And to ensure to our customers the best, we offer constant support before and after sales, following them at all stages of the relationship with services designed and calibrated to their needs.

### **Internationality.**

We are a team of 1300 persons in Europe, Asia and South America, ready to satisfy our customers all around the world. We offer our products in over 100 different Countries, with different regulatory standards and different lifestyle, spreading around the world design and Italian technology.

### **Green Attitude.**

We work with great care of the environment in all what we do, sure that only by protecting the world it will be possible to progress and grow in the future. Our manufacturing cycle is characterized by low environmental impact. We recycle 60% of the plastic material waste and most of the metal. We only use water-based paints or UV curing. We are replacing the electroplating bath with the innovative and more environmentally friendly MSD process that eliminates any type of harmful emissions.

### **All-round safety.**

The safety of people is an absolute priority. This is why we want to create secure and comfortable environments, using high quality and user-friendly products that are the outcome of research targeting the common good. Like the SICURY shuttered mechanism, a patent system developed in 1968, which revolutionized the safety of power sockets, and which we licensed free of charge to all operators in the sector, so that the lives of children could be made safer and parents less worried.



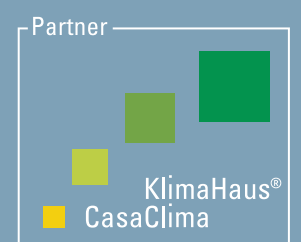


A CULTURE BASED  
ON **SOLID** AND  
**CLEAR VALUES.**

Introduction page 1  
Total look page 2  
Controls page 4  
Light page 6

Comfort page 8  
Safety page 10  
International page 12  
Customization page 14

By-me page 16  
By-com page 18  
Materials page 22  
Colours page 24



B.D17006 EN 1707



Viale Vicenza, 14 · 36063 Marostica VI · Italy · Tel. +39 0424 488 600 · Fax. +39 0424 488 709 · [www.vimar.com](http://www.vimar.com)